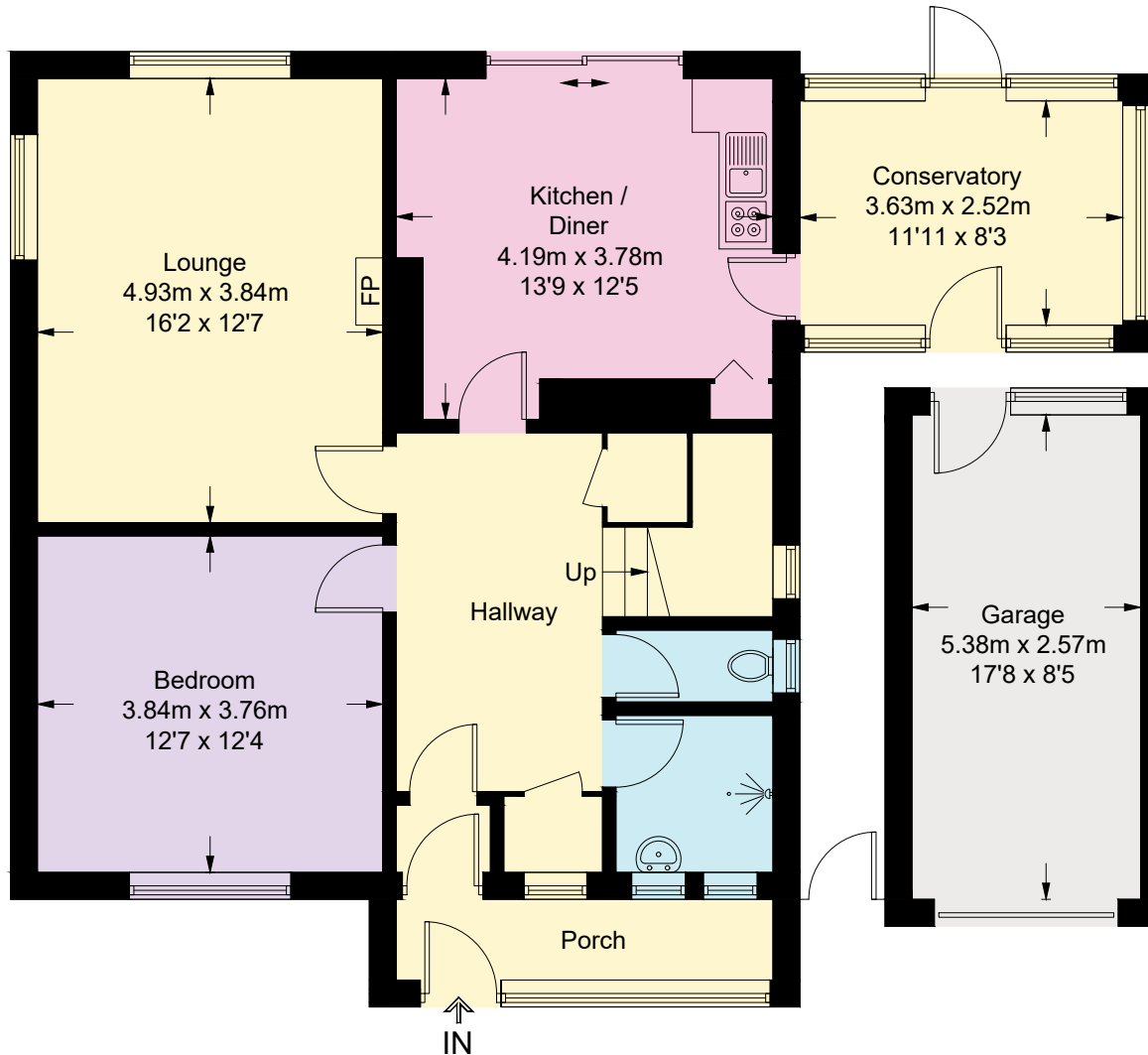


2 Cambrian Drive, Rhos-on-Sea, LL28 4SL

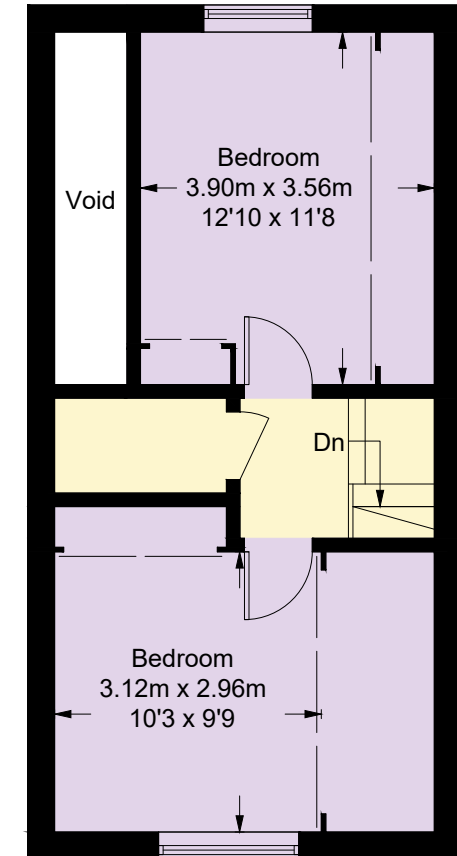
Approximate Gross Internal Area = 121.4 sq m / 1307 sq ft

Garage = 13.9 sq m / 150 sq ft

Total = 135.3 sq m / 1457 sq ft (Excluding Void)



Ground Floor



First Floor

This plan is for layout guidance only. Not drawn to scale unless stated. Windows and door openings are approximate. Whilst every care is taken in the preparation of this plan, please check all dimensions, shapes and compass bearings before making any decisions reliant upon them.

Fourlabs.co © 2025 (ID1183739)